

N E W P R O D U C T R A N G E

# KEYLIGHTING

L I G H T I N G T E C H N O L O G Y



Our **VERSILUS II** range of suspended T5 fluorescent luminaires, offer up light & down light elements for versatility of application. Available with high frequency or dimming control gear. All versions have integral emergency options, which run 1 lamp for 3 hours at approximately 10% of the normal light output. These fittings can also be coupled together to form a continuous run. These fittings are complemented by 2 styles of wall mounted Uplighter and a suspended modular version with back wings.

### Versilus II

The main body is manufactured from extruded aluminium that gives the fitting its sharp lines and consistent look. The end caps are die-cast aluminium. The back of the fitting features a removable perforated steel panel that gives the up light element. The louvre is manufactured from injection-moulded vacuum metalised cross blades and specular anodised aluminium sides. Clips dually retain the louvre and the earth leads add security. The fitting is epoxy polyester powder coated RAL9010 60% gloss.

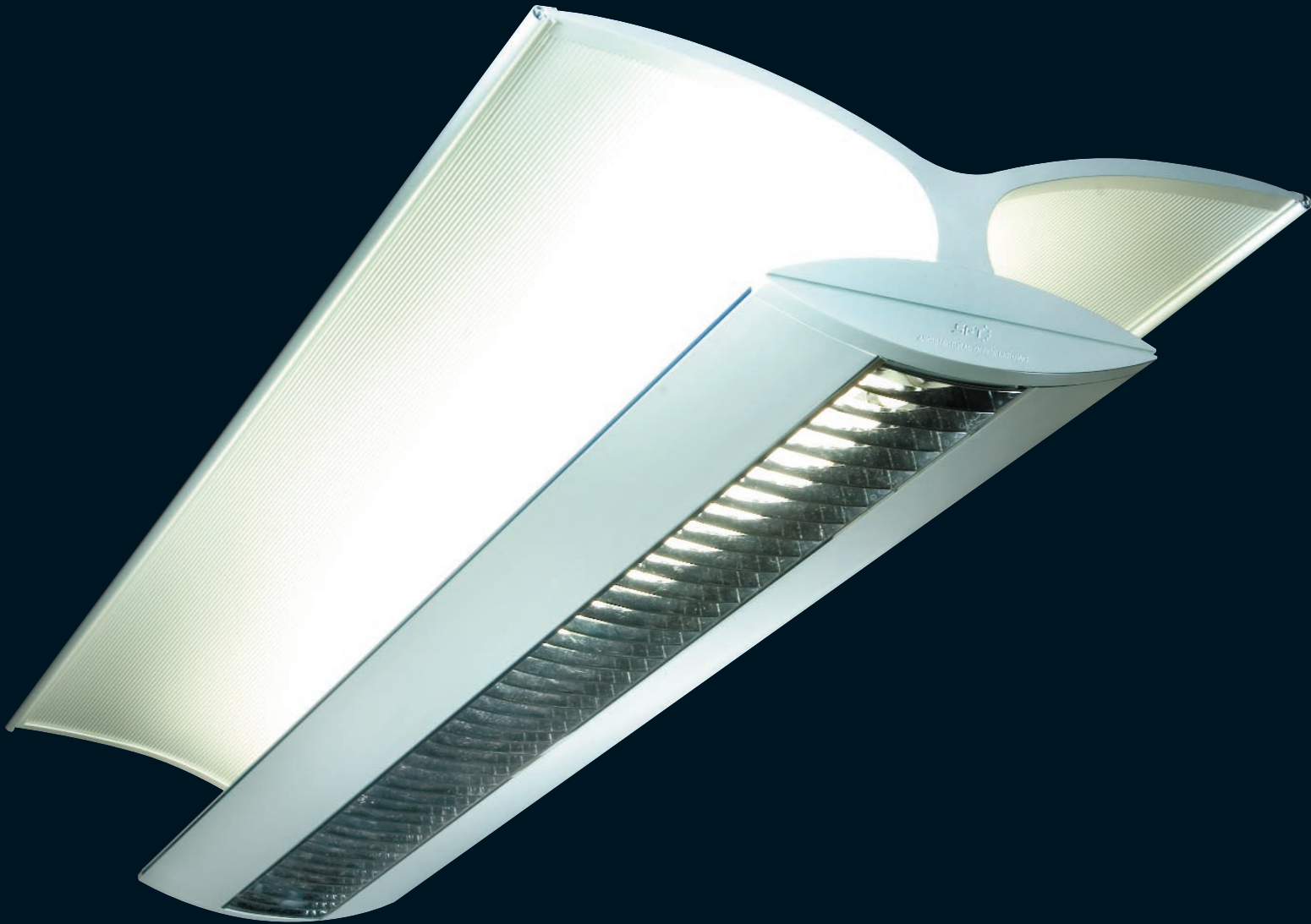


### Ordering Details

Part Number	Description	Dimensions			Weight
VER-2-228-C2	2x28 Watt Versilus II c/w Category Two Louvre	1201	240	57	3.50
VER-2-254-C2	2x54 Watt Versilus II c/w Category Two Louvre	1201	240	57	4.20
VER-2-235-C2	2x35 Watt Versilus II c/w Category Two Louvre	1501	240	57	3.50
VER-2-249-C2	2x49 Watt Versilus II c/w Category Two Louvre	1501	240	57	4.20
VER-2-128-C2	1x28 Watt Versilus II c/w Category Two Louvre	1201	240	57	3.50
VER-2-154-C2	1x54 Watt Versilus II c/w Category Two Louvre	1201	240	57	4.20
VER-2-135-C2	1x35 Watt Versilus II c/w Category Two Louvre	1501	240	57	3.50
VER-2-149-C2	1x49 Watt Versilus II c/w Category Two Louvre	1501	240	57	4.20

## Versilus II Reflective

This fittings features the same main body as the Versilus II modular but has the additional back wings which captures the up light element on their reflective surface to give an aesthetically pleasing appearance. This fitting is ideal for many applications but is especially suited to high ceiling spaces.



## Ordering Details

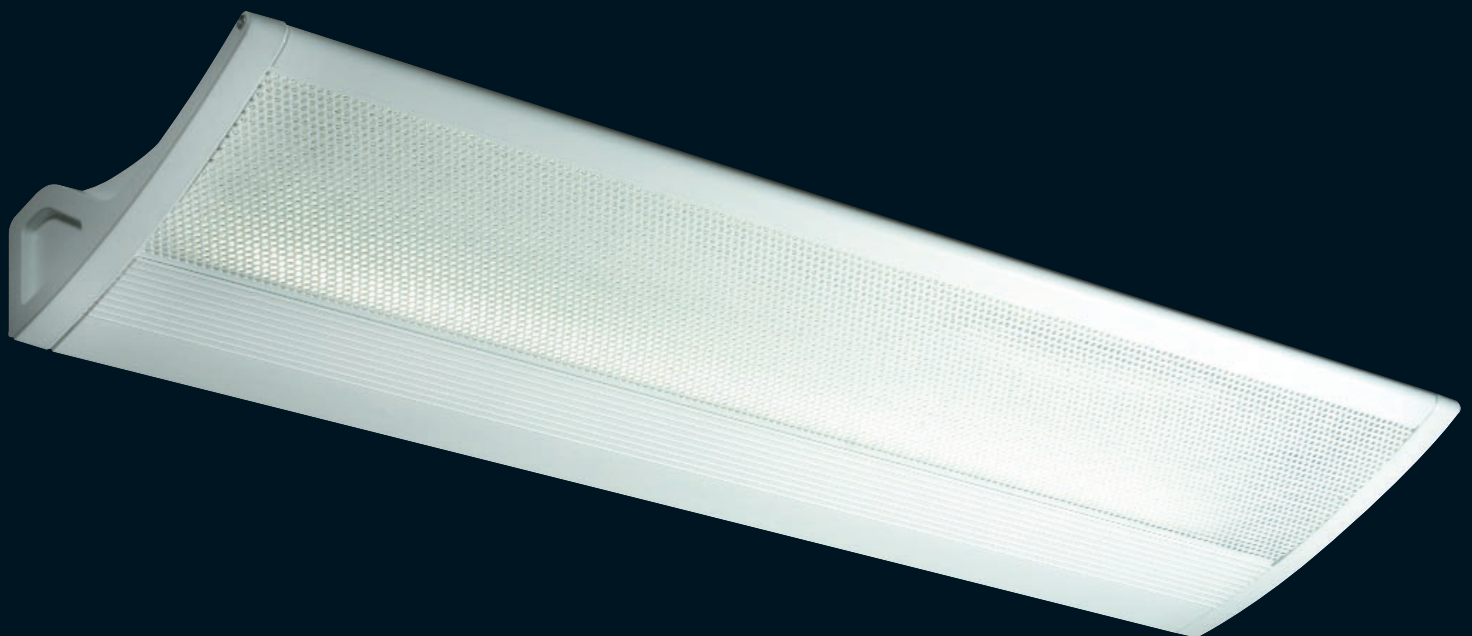
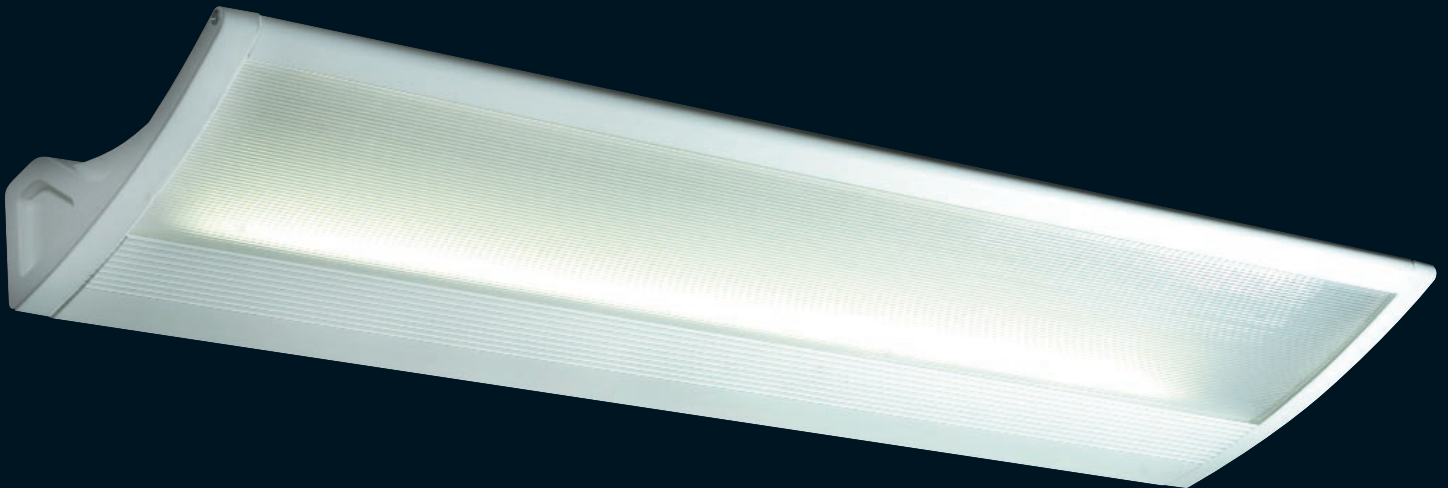
Part Number	Description	Max Dimensions			Weight
VER-2-228-C2-UL	2x28 Watt Versilus II Reflective c/w Cat 2 Louvre	1201	471	160	6.00
VER-2-254-C2-UL	2x54 Watt Versilus II Reflective c/w Cat 2 Louvre	1201	474	160	6.00

All fittings are supplied c/w suspension kit and are pre-wired with 1.5m of flex to a ceiling plate for ease of installation.

The above are available with dimming control gear and emergency options.

## Versilus II Uplighter

This wall mounted Uplighter provides an attractive solution where complimentary lighting is required within an area. It also features a diffused down light element. The front down light portion of the fitting can be either a reeded opal acrylic diffuser or a perforated panel backed with an opal sheet to give the gentle diffused appearance.



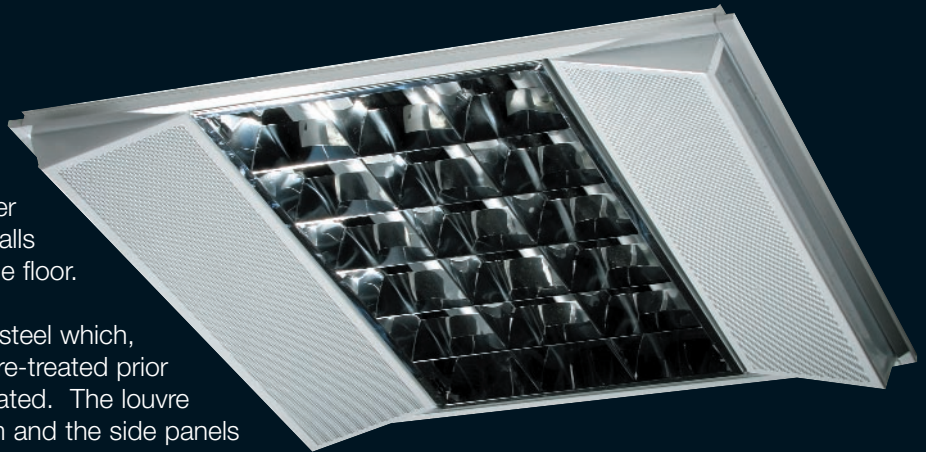
## Ordering Details

Part Number	Description	Max Dimensions			Weight
VER-2-124-UL	24 Watt T5 Uplighter ñ Acrylic Diffuser	600	181	55	1.30
VER-2-124-UL-P	24 Watt T5 Uplighter ñ Perforated Diffuser	600	181	55	1.10

## Orizon Flux Master

A recessed T5 fitting designed to meet the requirements of LG3/LG7. This fitting features a central category two louvre and two perforated drop down panels at either side which allow for illumination of walls as well as light at desk height and the floor.

The body is constructed from sheet steel which, is punch, folded, welded and then pre-treated prior to being epoxy polyester powder coated. The louvre is produced from specular aluminium and the side panels incorporate an opal flexi lens and a reeded side panel to prevent glare.



Also available is the Master fitting which features flat perforated sides.

## Dimensions & Weight

Part Number	Description	Width	Length	Height	Weight
TL5R-314-C2-RFP	3x14 watt T5 Orizon Flux Master	597	597	75	4.50
TL5R-414-C2-RFP	4x14 watt T5 Orizon Flux Master	597	597	75	5.10
TL5R-314-C2	3X14 watt T5 Master	597	597	75	4.60
TL5R-414-C2	4x14 watt T5 Master	597	597	75	5.10

All T5 fittings are high frequency as standard, the above are also available in 24 watt versions and all can have dimmable control gear and all fittings have the option of integral emergency

## Micro-Prism Plus

A recessed fitting designed to utilise T5 lamps. The central panel is a framed micro-prism diffuser and the two sides panels are frosted polycarbonate to give a more diffused light output. It is available in twin and four lamp options, high frequency and dimmable as well as integral emergency for all variations.

The fitting is manufactured from sheet steel which, is fabricated and then epoxy polyester powder coated.



## Dimensions & Weight

Part Number	Description	Width	Length	Height	Weight
FLRP662x14-F	2x14 Watt T5 Micro Prism Plus	595	595	75	5.50
FLRP664x14-F	4x14 Watt T5 Micro Prism Plus	595	595	75	5.50
FLRP662x24-F	2x24 Watt T5 Micro Prism Plus	595	595	75	5.50
FLRP664x24-F	4x24 Watt T5 Micro Prism Plus	595	595	75	5.50

## Gul Range

A range of indirect / direct recessed modulars to suit a variety of applications. These utilise either PLL lamps or T5 lamps and will fit into suspended and plasterboard ceilings. The standard FLRA is completely recessed whilst the FLRG is semi recessed with the basket dropping below the level of the ceiling, this fitting is ideal where ceiling depth is an issue.



The FLRA comes with or without Cat Two Louvre and has the options of solid or perforated fronts, which either forms the entire basket area or sits either side of the louvre.

The FLRG is available with PLL lamps only but again is with or without louvre, solid or perforated.

When installed in accordance with a correctly calculated lighting scheme these fittings meet the current LG3 Cat 7 legislation.

## Dimensions, Weight & Range

Part Number	Description	Width	Length	Height	Weight
FLRA662x55PLL-P	600x600x2PLL55 c/w Perforated Front	595	595	150	4.80
FLRA662x55PLL-S	600x600x2PLL55 c/w Solid Front	595	595	150	4.90
FLRA662x55PLL-P-C2	600x600x2PLL55 c/w Cat Two and Perf Sides	595	595	150	5.20
FLRA662x55PLL-S-C2	600x600x2PLL55 c/w Cat Two and Solid Sides	595	595	150	5.50

The FLRA is available in 40 & 55 watt PLL and 14 & 24 watt T5 Lamps

Part Number	Description	Width	Length*	Height	Weight
FLRG662x55PLL-P	600x600x2PLL55 c/w Perforated Front	595	595	150	5.50
FLRG662x55PLL-S	600x600x2PLL55 c/w Solid Front	595	595	150	5.60
FLRG662x55PLL-P-C	2600x600x2PLL55 c/w Cat Two and Perf Sides	595	595	150	5.50
FLRG662x55PLL-S-C	2600x600x2PLL55 c/w Cat Two and Solid Sides	595	595	150	5.60

\* height within ceiling, exposed depth is 90mm

The FLRG is available in 40 & 55 watt PLL only.  
Both fittings are available in single and twin lamps options.

[www.keylighting.co.uk](http://www.keylighting.co.uk)

Keylighting Limited,  
North Brook Works, Alkincote Street,  
Keighley, West Yorkshire BD21 5JT  
Tel: 01535 616 300 Fax: 01535 616 301  
Email: sales@keylighting.co.uk

Keylighting Limited,  
Unit 1, Hunter Road, Duchess Trading Estate,  
Rutherglen, Glasgow G73 1LB  
Tel: 0141 647 4499 Fax: 0141 647 4418  
Email: glasgow@keylighting.co.uk

Keylighting Limited,  
37 Dulverton Road, Witton,  
Birmingham B6 7EQ  
Tel: 0121 322 2300 Fax: 0121 322 2050  
Email: birmingham@keylighting.co.uk